

2024  
AM



**TAIWAN**  **KT**  
— *since 1947*



**TECHNOLOGY** \_\_\_\_\_ P04

**RATCHET SYSTEM** \_\_\_\_\_ P06

**MTB** \_\_\_\_\_ P10

FAT BIKE & SINGLE SPEED \_ P10

DH&FREERIDE \_ P11

BOOST\_ P12

MTB & GRAVEL \_ P13

**ROAD** \_\_\_\_\_ P14

ROAD DISC \_ P14

ROAD \_ P15

**PARTS** \_\_\_\_\_ P22

QUICK RELEASE \_ P16

FREEHUB BODY \_ P18

SPARE PARTS \_ P20

OTHER \_ P21





## Kun Teng Industry Co., Ltd. (KT Taiwan): Pioneering Excellence in Bicycle Hub Manufacturing Since 1947

For over seven decades, Kun Teng Industry Co., Ltd. (KT Taiwan) has been an unwavering symbol of precision and innovation in the world of bicycle hub manufacturing. Established in 1947 and nestled in the heart of the cycling industry Taichung of Taiwan, KT Taiwan has consistently delivered top-tier hubs that have set industry standards.

### A Hub Manufacturing Powerhouse

KT Taiwan is a professional hub manufacturer that offers a comprehensive suite of services in the creation of bicycle hubs. Their commitment to excellence is evident in their diverse product range, with four major hub engagements that cater to the distinct needs of cyclists worldwide.

### Made in Taiwan, Committed to Quality

A distinguishing feature of KT Taiwan's hubs is their commitment to quality and manufacturing excellence. Unlike some competitors who source components from elsewhere, all KT Taiwan hubs are proudly 100% made in Taiwan. Each hub undergoes rigorous examinations to ensure smoothness and concentricity, guaranteeing a flawless performance on every ride.

### A Dedicated Workforce and Impressive Capacity

With a team of 100 dedicated employees, KT Taiwan's commitment to producing high-quality hubs is unwavering. Their monthly production capacity of 100,000 units showcases their dedication to meeting the demands of the global cycling community.

In a world where precision and performance are paramount, Kun Teng Industry Co., Ltd. (KT Taiwan) stands as an industry leader, providing cyclists with the finest hubs that have earned a reputation for excellence since 1947. Their unwavering commitment to quality and innovation continues to propel the cycling industry forward, one hub at a time.



# TECHNOLOGIES



AM

TECHNOLOGY

RATCHET SYSTEM

MTB

ROAD

PARTS

## FOR REAR HUB

### X-12

For Rear Hub

Compatible with 12mm Thru axle.  
Only change end cap to fit.



- 10mm Thru axle: 135mm
- 12mm Thru axle: 142mm

5mm quick release  
x135 x145mm

## FOR FRONT HUB

### Convertible



IDØ5.2mm

IDØ12mm

IDØ15mm

Converter end cap from ID5.2 to ID12mm, 15mm

## ONE HUB ALL SOLUTION



Only change cassette body.

- RATCHET SYSTEM
- 6 Pawl 6 Springs 102T
- 4 Pawl 4 Springs
- 3 Pawl 1 Spring



Shimano 11SP - **M Series**

Sram XD - **X Series**  
Sram XDR - **D Series**

MS 12SP - **S Series**

## ANTI BITE



### FOR MTB SELECTION

Press-fit Cr-Mo plate into Alloy cassette body  
prevent from free wheel bite into.

- 4 Pawl 4 Springs

## RATCHET SYSTEM



## 612 POE 6 PAWLS + 6 SPRINGS



## 102 POE 6 PAWLS + 6 SPRINGS

The most popular hub for all mtb system.



## PATENT NO.

- TW 1252815
- US 7121394B2
- DE 202005000114.7
- NL 1030207
- CN 201031894Y
- DE 202007005699.0



AM

TECHNOLOGY

RATCHET SYSTEM

MTB

ROAD

PARTS

# RATCHET SYSTEM FOR MTB



AM

TECHNOLOGY

RATCHET SYSTEM

MTB

ROAD

PARTS



## QL-DC8F

Spoke Hole: 14G/28, 32, 36  
 Axle System: 12 / 15mm Thru Axle x110mm  
 O.L.D.: 110mm  
 Axle Material: AL7075  
 Flange PCD: 58mm  
 Sealed Cartridge Bearings(SB): 2pcs  
 Weight: 171g

### OPTIONS

CL	<b>QL-DC8F</b>	IS6	<b>QL-DDYF</b>	110mm
CL	<b>QL-DC4F</b>	IS6	<b>QL-DDXF</b>	100mm



## QL-DC9MR

Spoke Hole: 14G/28, 32, 36  
 Axle System: 12mm Thru Axle x148mm  
 O.L.D.: 148mm  
 Axle Material: AL7075  
 Flange PCD: 58mm  
 Sealed Cartridge Bearings(SB): 4pcs  
 Weight: 298g

### OPTIONS

GRAVEL&MTB 12x142mm				
CL	<b>QL-DC5MR</b>	IS6	<b>QL-DD5MR</b>	Shimano 11SP
CL	<b>QL-DC5XR</b>	IS6	<b>QL-DD5XR</b>	Sram XD
CL	<b>QL-DC5SR</b>	IS6	<b>QL-DD5SR</b>	MS 12SP
BOOST 12x148mm				
CL	<b>QL-DC9MR</b>	IS6	<b>QL-DD9MR</b>	Shimano 11SP
CL	<b>QL-DC9XR</b>	IS6	<b>QL-DD9XR</b>	Sram XD
CL	<b>QL-DC9SR</b>	IS6	<b>QL-DD9SR</b>	MS 12SP



# RATCHET SYSTEM FOR MTB



## QL-DCTF

Spoke Hole: 14G/28  
 Axle System: 12 / 15mm Thru Axle x110mm  
 O.L.D.: 110mm  
 Axle Material: AL7075  
 Flange PCD: 46mm/41mm  
 Sealed Cartridge Bearings(SB): 2pcs  
 Weight: 153g

### OPTIONS

CL	<b>QL-DCVF</b>	IS6	<b>QL-DDVF</b>	100mm
CL	<b>QL-DCTF</b>	IS6	<b>QL-DDTF</b>	110mm



## QL-DCTXR

Spoke Hole: 14G/28  
 Axle System: 12mm Thru Axle x148mm  
 O.L.D.: 148mm  
 Axle Material: AL7075  
 Flange PCD: L: 38.1/39.8mm  
 R: 50/52mm  
 Sealed Cartridge Bearings(SB): 4pcs  
 Weight: 276g

### OPTIONS

12x148mm				
CL	<b>QL-DCTMR</b>	IS6	<b>QL-DDTMR</b>	Shimano 11SP
CL	<b>QL-DCTXR</b>	IS6	<b>QL-DDTXR</b>	Sram XD
CL	<b>QL-DCTSR</b>	IS6	<b>QL-DDTSR</b>	MS 12SP
12x142mm				
MTB & GRAVEL	MTB			
CL	<b>QL-DCVMR</b>	IS6	<b>QL-DDVMR</b>	Shimano 11SP
CL	<b>QL-DCVXR</b>	IS6	<b>QL-DDVXR</b>	Sram XD
CL	<b>QL-DCVSR</b>	IS6	<b>QL-DDVSR</b>	MS 12SP



AM

TECHNOLOGY

RATCHET SYSTEM

MTB

ROAD

PARTS



# RATCHET SYSTEM FOR ROAD DISC



AM

TECHNOLOGY

RATCHET SYSTEM

MTB

ROAD

PARTS



## QL-DW5F

Spoke Hole: 14G/24, 28  
Axle System: 12mm Thru Axle x100mm  
O.L.D.: 100mm  
Axle Material: AL7075  
Flange PCD: 46/42.5mm  
Sealed Cartridge Bearings(SB): 2pcs  
Weight: 107g



## QL-DCSMR

Spoke Hole: 14G/24, 28  
Axle System: 12mm Thru Axle x142mm  
O.L.D.: 142mm  
Axle Material: AL7075  
Flange PCD: L: 36/38mm  
R: 50/52mm  
Sealed Cartridge Bearings(SB): 4pcs  
Weight: 225g

### OPTIONS

<b>QL-DCSMR</b>	Shimano 11SP
<b>QL-DCSDR</b>	SRAM XDR
<b>QL-DCSCR</b>	Campy
<b>QL-DCSYR</b>	Campy N3W



NEW



# RATCHET SYSTEM FOR ROAD



## QL-ZN1F

Spoke Hole: 14G/20, 24  
 Axle System: 5.2mm quick release x100 x108mm  
 O.L.D.: 100mm  
 Axle Material: AL7075  
 Flange PCD: 32mm  
 Sealed Cartridge Bearings(SB): 2pcs  
 Weight: 91g



## QL-DR4MR

Spoke Hole: 14G/20, 24  
 Axle System: 5.2mm quick release x130 x140mm  
 O.L.D.: 130mm  
 Axle Material: AL7075  
 Flange PCD: L: 39.8/40.2mm  
                   R: 50/52mm  
 Sealed Cartridge Bearings(SB): 4pcs  
 Weight: 248g

### OPTIONS

<b>QL-DR4MR</b>	Shimano 11SP
<b>QL-DR4DR</b>	SRAM XDR
<b>QL-DR4CR</b>	Campy
<b>QL-DR4YR</b>	Campy N3W



**KTT**



AM

TECHNOLOGY

RATCHET SYSTEM

MTB

ROAD

PARTS





## QL-Y44TMR

Spoke Hole: 14G/28, 32, 36  
 Axle System: 12mm Thru axle x148mm  
 O.L.D.: 148mm  
 Axle Material: AL7075  
 Flange PCD: 58mm / 64mm  
 Sealed Cartridge Bearings(SB): 4pcs  
 Weight: 315g  
 Freehub Body: AL7075 6 pawls 6 springs, compatible w/Shimano or Sram XD cassette

### OPTIONS

102 POE OPTIONS				
CL	<b>QL-Y44TMR</b>	IS6	<b>QL-Y77TMR</b>	Shimano 11SP
CL	<b>QL-Y44TXR</b>	IS6	<b>QL-Y77TXR</b>	Sram XD
CL	<b>QL-Y44TSR</b>	IS6	<b>QL-Y77TSR</b>	MS 12SP
612 POE OPTIONS				
CL	<b>QL-Y44WMR</b>	IS6	<b>QL-Y77WMR</b>	Shimano 11SP
CL	<b>QL-Y44WXR</b>	IS6	<b>QL-Y77WXR</b>	Sram XD
CL	<b>QL-Y44WSR</b>	IS6	<b>QL-Y77WSR</b>	MS 12SP

**Boost X-12**



## QL-S3CF

Spoke Hole: 14G/28, 32, 36  
 Axle System: 12 / 15mm Thru axle x110mm  
 O.L.D.: 110mm  
 Axle Material: AL7075  
 Flange PCD: 58mm  
 Sealed Cartridge Bearings(SB): 2pcs  
 Weight: 152g  
 Option: IS6: **QL-S37F**  
 Option: SUPER BOOST: IS6: **QL-DHWF**  
 20mm x110mm Thru-axle

## Boost



## QL-4ATSR

Spoke Hole: 14G/28, 32, 36  
 Axle System: 12mm Thru axle x148mm  
 O.L.D.: 148mm  
 Axle Material: AL7075  
 Flange PCD: 58mm  
 Sealed Cartridge Bearings(SB): 4pcs  
 Weight: 308g  
 Freehub Body: AL7075 4 pawls 4 springs, compatible w/Shimano or Sram XD cassette

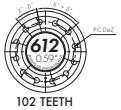
### OPTIONS

CL	<b>QL-4ATMR</b>	IS6	<b>QL-4AEMR</b>	Shimano 11SP
CL	<b>QL-4ATXR</b>	IS6	<b>QL-4AEXR</b>	Sram XD
CL	<b>QL-4ATSR</b>	IS6	<b>QL-4AESR</b>	MS 12SP

**Boost X-12**



# MTB & GRAVEL



**102T**



## QL-Y74TXR

Spoke Hole: 14G/28, 32, 36  
 Axle System: 5mm quick release x135 x145mm,  
 12mm Thru axle x142mm  
 Axle Material: AL7075  
 Flange PCD: 58mm / 64mm  
 Sealed Cartridge Bearings(SB): 4pcs  
 Weight: 302g  
 Freehub Body: AL7075 6 pawls 6 springs, compatible w/Shimano  
 or Sram XD cassette

### OPTIONS

102 POE OPTIONS				
CL	<b>QL-Y43TMR</b>	IS6	<b>QL-Y74TMR</b>	Shimano 11SP
CL	<b>QL-Y43TXR</b>	IS6	<b>QL-Y74TXR</b>	Sram XD
CL	<b>QL-Y43TSR</b>	IS6	<b>QL-Y74TSR</b>	MS 12SP
612 POE OPTIONS				
CL	<b>QL-Y43WMR</b>	IS6	<b>QL-Y74WMR</b>	Shimano 11SP
CL	<b>QL-Y43TWR</b>	IS6	<b>QL-Y74TWR</b>	Sram XD
CL	<b>QL-Y43WSR</b>	IS6	<b>QL-Y74WSR</b>	MS 12SP

## QL-S3GF

Spoke Hole: 14G/28, 32, 36  
 Axle System: 5mm quick release x100 x108mm,  
 12 / 15mm Thru axle x100mm  
 O.L.D.: 100mm  
 Axle Material: AL7075  
 Flange PCD: 58mm  
 Sealed Cartridge Bearings(SB): 2pcs  
 Weight: 144g  
 Option: Center Lock: **QL-SLXF**



## QL-4S2SR

Spoke Hole: 14G/28, 32, 36  
 Axle System: 5mm quick release x135 x145mm,  
 12mm Thru axle x142mm  
 Axle Material: AL7075  
 Flange PCD: 58mm  
 Sealed Cartridge Bearings(SB): 4pcs  
 Weight: 290g  
 Freehub Body: AL7075 4 pawls 4 springs, compatible w/Shimano  
 or Sram XD cassette

### OPTIONS

CL	<b>QL-4S3MR</b>	IS6	<b>QL-4S2MR</b>	Shimano 11SP
CL	<b>QL-4S3XR</b>	IS6	<b>QL-4S2XR</b>	Sram XD
CL	<b>QL-4S3SR</b>	IS6	<b>QL-4S2SR</b>	MS 12SP



**X-12**



AM

TECHNOLOGY

PATCHET SYSTEM

MTB

ROAD

PARTS



AM

TECHNOLOGY

RATCHET SYSTEM

MTB

ROAD

PARTS

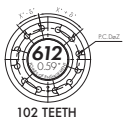


## QL-TW1F

### EXCHANGEABLE CONVERTER CAPS

Spoke Hole: 14G/32, 36  
 Axle System: 5mm quick release x100 x108mm,  
 9 / 15mm Thru axle x100mm,  
 20mm Thru axle x110mm

O.L.D.: 110mm  
 Axle Material: AL7075  
 Flange PCD: 58mm  
 Sealed Cartridge Bearings(SB): 2pcs  
 Weight: 215g  
 Option: IS6: **QL-TWEF** 15 x110mm BOOST



## QL-Y7DTMR

Spoke Hole: 14G/28, 32, 36  
 Axle System: 12mm Thru axle x150mm / 157mm  
 Axle Material: AL7075  
 Flange PCD: R: 58 / L: 64mm  
 Sealed Cartridge Bearings(SB): 4pcs  
 Weight: 326g  
 Freehub Body: AL7075 6 pawls 6 springs, compatible w/Shimano or Sram XD cassette

### OPTIONS

#### 102 POE OPTIONS

IS6	<b>QL-Y7DTMR</b>	Shimano 11SP
IS6	<b>QL-Y7DTXHR</b>	Sram XD
IS6	<b>QL-Y7DTSR</b>	MS 12SP

#### 612 POE OPTIONS

IS6	<b>QL-Y7DWMR</b>	Shimano 11SP
IS6	<b>QL-Y7DWXHR</b>	Sram XD
IS6	<b>QL-Y7DWSR</b>	MS 12SP



## QL-41SMR

Spoke Hole: 14G/28, 32, 36  
 Axle System: 12mm Thru axle x150mm / 157mm  
 Axle Material: AL7075  
 Flange PCD: R: 58 / L: 64mm  
 Sealed Cartridge Bearings(SB): 4pcs  
 Weight: 317g  
 Freehub Body: AL7075 4 pawls 4 springs, compatible w/Shimano or Sram XD cassette

### OPTIONS

IS6	<b>QL-41SMR</b>	Shimano 11SP
IS6	<b>QL-41SXR</b>	Sram XD
IS6	<b>QL-41SSR</b>	MS 12SP



# FAT BIKE



## QL-TBZF

Spoke Hole: 14G/28, 32, 36  
 Axle System: 15mm Thru axle x150mm  
 Axle Material: AL7075  
 Flange PCD: 58mm  
 Sealed Cartridge Bearings(SB): 2pcs  
 Weight: 280g

### OPTIONS

CL	<b>QL-TBCF</b>	15 x135mm
IS6	<b>QL-TBYF</b>	No CNC Disc



## QL-THEF

Spoke Hole: 14G/28, 32,36  
 Axle System: 15mm thru Axle x 150mm  
 Axle Material: AL7075  
 Flange PCD: 58mm  
 Sealed Cartridge Bearings(SB): 2pcs  
 Weight: 238g

### OPTIONS

IS6	<b>QL-THDF</b>	15 x135mm
-----	----------------	-----------



## QL-DD7R

Spoke Hole: 14G/28, 32, 36  
 Axle System: 12mm Thru Axle x190mm / 197mm  
 Axle Material: AL7075  
 Flange PCD: 58mm  
 Sealed Cartridge Bearings(SB): 4pcs  
 Weight: 390g  
 Freehub body: Steel Shimano HG ratchet system



## QL-THEMR

Spoke Hole: 14G/28, 32,36  
 Axle System: 12mm thru Axle x 190mm/197mm  
 Axle Material: AL7075  
 Flange PCD: 58mm  
 Sealed Cartridge Bearings(SB): 4pcs  
 Weight: 484g  
 Freehub body: Steel Shimano HG 3 pawls 1 spring

### OPTIONS

IS6	<b>QL-THDMR</b>	12 x170/177mm
-----	-----------------	---------------

# SINGLE SPEED



## QL-DY9R

Spoke Hole: 14G/28, 32, 36  
 Axle System: 12mm Thru Axle x142mm  
 Axle Material: AL7075  
 Flange PCD: 58mm  
 Sealed Cartridge Bearings(SB): 4pcs  
 Weight: 335g  
 Freehub body: Steel Single speed ratchet system

### OPTIONS

IS6	<b>QL-DY8R</b>	12x148m
-----	----------------	---------



AM

TECHNOLOGY

RATCHET SYSTEM

MTB

ROAD

PARTS



AM

TECHNOLOGY

RATCHET SYSTEM

MTB

ROAD

PARTS



## QL-4W5F

Spoke Hole: 14G/24, 28  
 Axle System: 5mm quick release x100 x108mm,  
 12mm Thru axle x100mm  
 O.L.D.: 100mm  
 Axle Material: AL7075  
 Flange PCD: 40mm  
 Sealed Cartridge Bearings(SB): 2pcs  
 Weight: 107g



## QL-SLXF

Spoke Hole: 14G/24, 28  
 Axle System: 5mm quick release x100 x108mm,  
 12mm Thru axle x100mm  
 O.L.D.: 100mm  
 Axle Material: AL7075  
 Flange PCD: 58mm  
 Sealed Cartridge Bearings(SB): 2pcs  
 Weight: 148g  
 Option: IS6: **QL-S3GF**



## QL-4W5MR

Spoke Hole: 14G/24, 28  
 Axle System: 5mm quick release x135 x145mm,  
 12mm Thru axle x142mm  
 O.L.D.: 142mm  
 Axle Material: AL7075  
 Flange PCD: L: 40 / R: 58mm  
 Sealed Cartridge Bearings(SB): 4pcs  
 Weight: 234g  
 Freehub Body: AL7075 4 pawls 4 springs, compatible w/ Shimano  
 11sp, Sram XDR, or Campy cassette

### OPTIONS

CL	<b>QL-4W5MR</b>	Shimano 11SP
CL	<b>QL-4W5DR</b>	Sram XDR
CL	<b>QL-4W5CR</b>	Campy
CL	<b>QL-4W5YR</b>	Campy N3W



## QL-4VBMR

Spoke Hole: 14G/24, 28  
 Axle System: 5mm quick release x135 x145mm,  
 12mm Thru axle x142mm  
 O.L.D.: 142mm  
 Axle Material: AL7075  
 Flange PCD: 58mm  
 Sealed Cartridge Bearings(SB): 4pcs  
 Weight: 268g  
 Freehub Body: AL7075 4 pawls 4 springs, compatible w/ Shimano  
 11sp, Sram XDR, or Campy cassette

### OPTIONS

CL	<b>QL-4VBMR</b>
CL	<b>QL-4VBDR</b>
CL	<b>QL-4VBCR</b>
CL	<b>QL-4VBYR</b>



# ROAD



## QL-ZN1F

Spoke Hole: 14G/20  
 Axle System: 5mm quick release  
 Axle Material: AL7075  
 Sealed Cartridge Bearings(SB): 2pcs  
 Weight: 87g



## QL-2VDF

Spoke Hole: 14G/20  
 Axle System: 5mm quick release  
 Axle Material: AL7075  
 Flange PCD: 32mm  
 Sealed Cartridge Bearings(SB): 2pcs  
 Weight: 75g



## QL-4NAMR

Spoke Hole: 14G/20, 24  
 Axle System: 5mm quick release  
 Axle Material: AL7075  
 Sealed Cartridge Bearings(SB): 4pcs  
 Weight: 230g  
 Freehub Body: AL7075 4 pawls 4 springs, compatible w/ Shimano 11sp, Sram XDR, or Campy cassette

### OPTIONS

<b>QL-4NADR</b>	Sram XDR
<b>QL-4NACR</b>	Campy
<b>QL-4NAYR</b>	Campy N3W



## QL-4V7MR

Spoke Hole: 14G/20, 24  
 Axle System: 5mm quick release  
 Axle Material: AL7075  
 Sealed Cartridge Bearings(SB): 4pcs  
 Weight: 248g  
 Freehub Body: AL7075 4 pawls x 4 springs w/ Shimano 11sp, Sram XDR, or Campy cassette

### OPTIONS

<b>QL-4V7DR</b>	Sram XDR
<b>QL-4V7CR</b>	Campy
<b>QL-4V7YR</b>	Campy N3W



AM

TECHNOLOGY

PATCHET SYSTEM

MTB

ROAD

PARTS

# PARTS QUICK RELEASE



AM



**QL-205FB [R]** 44g (M12xP1.5x163.5mm)

**QL-204FB [F]** 36g (M12xP1.5x121.5mm)

TECHNOLOGY

**QL-205MO [R]** 62g, W/ tool-free lever

**QL-204MO [F]** 56g, W/ tool-free lever

NEW (Patented)



**QL-205SV [R]** 52g

**QL-204SV [F]** 43g

Built-in tool

Available for Shimano Syntace, Sram, DT Swiss, Fox Drop out system

RATCHET SYSTEM



**QL-205MU [R]** 44g (M12xP1.5x180mm)

**QL-204MU [F]** 32g (M12xP1.5x123mm)

53g (M15xP1.5x125mm)

MTB

ROAD



**QL-205RE [R]** 64g

**QL-204RE [F]** 58g

PARTS

**QL-205SH [R]**

Option: With Nut **205SK**, For ID12, 105g

**QL-204SH [F]**

Option: With Nut **204SK**, For ID12 / 15, 66g



Available for Shimano Syntace, Sram, DT Swiss, Fox Drop out system



**QL-205V [R]** 52g

**QL-204V [F]** 47g





Titanium material

**QL-205VM [R]** 27g, Titanium  
**QL-204VM [F]** 25g, Titanium

**QL-205VN [R]** 36g Cr-Mo  
**QL-204VN [F]** 32g Cr-Mo



**QL-205YA [R]** 60g  
**QL-204YA [F]** 55g



**QL-205N [R]** 64g  
**QL-204N [F]** 58g



**QL-205V3 [R]** 56.5g  
**QL-204V3 [F]** 50.5g



**QL-205BZ 10MM [R]** 111g  
**QL-204BZ 9MM [F]** 80g



**QL-205C [R]** 100g  
**QL-204C [F]** 95g



**QL-205FK [R]** 35g  
**QL-204FK [F]** 30g



AM

TECHNOLOGY

PATCHET SYSTEM

MTB

ROAD

PARTS



# PARTS FREEHUB BODY



AM

TECHNOLOGY

RATCHET SYSTEM

MTB

ROAD

PARTS

## DD SERIES (RATCHET SYSTEM) | FOR BOOST/MTB/GRAVEL/ROAD



### SRAM XD/XDR RATCHET SYSTEM Freehub Body

AL7075 RATCHET SYSTEM for SRAM XD/XDR.

**Cr-Mo FHB Available**



### Shimano MS RATCHET SYSTEM Freehub Body

AL7075 RATCHET SYSTEM for Micro Spline 12sp.

**Cr-Mo FHB Available**



### Shimano RATCHET SYSTEM Freehub Body

AL7075 RATCHET SYSTEM for Shimano 11sp.

**Cr-Mo FHB Available**

## REGULAR

## 612 POE SEREIS (6X6 SERIES) | FOR BOOST / MTB/ DH / GRAVEL



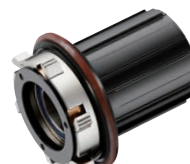
### SRAM XD 612 POE Freehub Body

STEEL + AL7075 6 springs & 6pawls 612 POE for SRAM XD



### Shimano MS 612 POE Freehub Body

Freehub Body  
STEEL + AL7075 6 springs & 6pawls 612 POE form Micro Shimano



### Shimano 612 POE Freehub Body

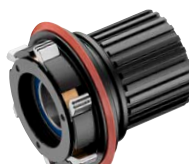
STEEL + AL7075 6 springs & 6pawls 612 POE form Shimano 11sp

## 102 POE SERIES (6X6 SERIES) | FOR BOOST / MTB / DH / GRAVEL



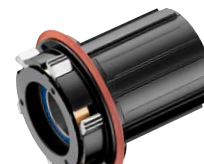
### SRAM XD 102 POE Freehub Body

AL7075 6 springs & 6pawls 102 POE for SRAM XD



### Shimano MS 102 POE Freehub Body

AL7075 6 springs & 6pawls 102 POE form Micro Shimano



### Shimano 102 POE Freehub Body

AL7075 6 springs & 6pawls 102 POE form Shimano 11sp

## 4X4 SERIES | FOR MTB / ROAD / ROAD DISC / GRAVEL



### SRAM XD / XDR 4X4

AL7075 4 springs & 4 pawls for SRAM XD / XDR.



### Shimano MS 4X4 Freehub Body

AL7075 or Cr-Mo 4 springs & 4 pawls 102T for Micro Spline 12sp.



### Shimano 4X4 Freehub Body

AL7075 or Cr-Mo 4 springs & 4 pawls for Shimano 11sp.



# ENDURO HUB

**4X4 SERIES** | FOR BOOST / MTB / ROAD / ROAD DISC / GRAVEL



**SRAM XD / XDR 4X4**  
Cr-Mo 4 springs & 4 pawls for SRAM XD / XDR.



**Shimano MS 4X4 Freehub Body**  
Cr-Mo 4 springs & 4 pawls for Micro Spline 12sp.



**Shimano 4X4 Freehub Body**  
Cr-Mo 4 springs & 4 pawls for Shimano 11sp.

**3X1 SERIES** | FOR MTB / BOOST



**SRAM XD / XDR 3X1**  
Cr-Mo 3 pawls & 1 spring for SRAM XD / XDR.



**Shimano MS 3X1 Freehub Body**  
Cr-Mo 3 pawls & 1 spring for Micro Spline 12sp.



**Shimano 3X1 Freehub Body**  
Cr-Mo 3 pawls & 1 spring for Shimano 11sp.





AM

TECHNOLOGY

RATCHET SYSTEM

MTB

ROAD

PARTS

## CONVERTER KIT

### FOR 9SP TO 1SP, ACCESSORY INCLUDING

Sprocket, 2 Alloy spacers 13.5L & 20L, lock-ring & shim washer 1T

#### Code no.

MCPAHY31200C5 (12T)

MCPAHY313CP23 (13T)

MCPAHY314CP23 (14T)

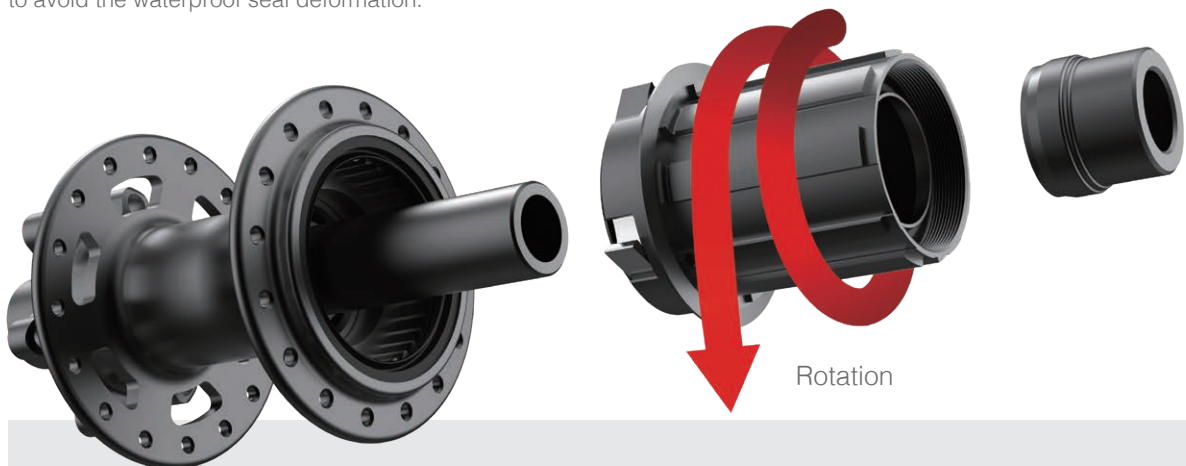
MCPAHY316CP23 (16T)

MCPAHY318CP23 (18T)



## FREEHUB BODY INSTALLATION GUIDE

Rotated push the cassette into hubshell (rotation must be anticlockwise), to avoid the waterproof seal deformation.



### CAUTION!!

The installation of cassette body must be rotated anticlockwise to press into the hub shell. It may cause seal damage or deformation by pawls, and it might lose the water resistance and cause the friction when riding.



AM

TECHNOLOGY

RATCHET SYSTEM

MTB

ROAD

PARTS



PRODUCTION TRACEABILITY ON EACH TAIWAN MADE HUB:

# 1902-4W8 M R-100

YEAR	WEEK	MODEL NO.	DRIVER	F/R	NUMBER
------	------	-----------	--------	-----	--------

## TECHNOLOGIES

### EXPLORED SPARE PARTS FOR SERVICE KIT



### REPLACEMENT INSTRUCTION



### HUB WARRENTY AND MAINTENANCE GUIDE

