

2024
OEM



TAIWAN 
since 1947



OEM

ENDURO BOOST ————— P04

ENDURO MTB ————— P05

ROAD DISC ————— P06

ROAD ————— P07

TECHNOLOGIES ————— P08

SPORT DYNAMO HUB ————— P09

COASTER BRAKE ————— P10

INTER-3 GEAR HUB ————— P11

MICRO SPLINE
12SP 3X1





Kun Teng Industry Co., Ltd. (KT Taiwan): Pioneering Excellence in Bicycle Hub Manufacturing Since 1947

For over seven decades, Kun Teng Industry Co., Ltd. (KT Taiwan) has been an unwavering symbol of precision and innovation in the world of bicycle hub manufacturing. Established in 1947 and nestled in the heart of the cycling industry Taichung of Taiwan, KT Taiwan has consistently delivered top-tier hubs that have set industry standards.

A Hub Manufacturing Powerhouse

KT Taiwan is a professional hub manufacturer that offers a comprehensive suite of services in the creation of bicycle hubs. Their commitment to excellence is evident in their diverse product range, with four major hub engagements that cater to the distinct needs of cyclists worldwide.

Made in Taiwan, Committed to Quality

A distinguishing feature of KT Taiwan's hubs is their commitment to quality and manufacturing excellence. Unlike some competitors who source components from elsewhere, all KT Taiwan hubs are proudly 100% made in Taiwan. Each hub undergoes rigorous examinations to ensure smoothness and concentricity, guaranteeing a flawless performance on every ride.

A Dedicated Workforce and Impressive Capacity

With a team of 100 dedicated employees, KT Taiwan's commitment to producing high-quality hubs is unwavering. Their monthly production capacity of 100,000 units showcases their dedication to meeting the demands of the global cycling community.

In a world where precision and performance are paramount, Kun Teng Industry Co., Ltd. (KT Taiwan) stands as an industry leader, providing cyclists with the finest hubs that have earned a reputation for excellence since 1947. Their unwavering commitment to quality and innovation continues to propel the cycling industry forward, one hub at a time.



ENDURO BOOST Front ID Ø15 x 110mm / Rear ID Ø12 x 148mm



OEM

ENDURO

ROAD

TECHNOLOGIES

DYNAMO

COASTER BRAKE

INTER-3 GEAR



QL-TH8F

WEIGHT:229g

Spoke Hole:28, 32, 36

Option:Center Lock: QL-TH9F

Axle Material: AL7075

Sealed Cartridge Bearings (SB): 2pcs

ENDURO BOOST



QL-TH8MR

WEIGHT:401g

Spoke Hole:28, 32, 36

Axle Material: Cr-Mo

Freehub Body: Cr-Mo 3 pawls x 1 spring w/Shimano 11sp, MS
12sp or Sram XD cassette

Sealed Bearings (SB): 4pcs

Recommended for Cargo bike

OPTIONS

CL	QL-TH9MR	IS6	QL-TH8MR	Shimano 11SP
CL	QL-TH9XR	IS6	QL-TH8XR	Sram XD
CL	QL-TH9SR	IS6	QL-TH8SR	MS 12SP

"No 36H for Center Lock model "

ENDURO MTB Front ID Ø15 x 100mm / Rear ID Ø12 x 142mm



QL-THHF

WEIGHT: 227g

Spoke Hole: 28, 32, 36

Option: Center Lock: QL-TH2F

Axle Material: AL7075

Sealed Bearings (SB): 2pcs

ENDURO MTB



QL-TH1MR

WEIGHT: 398g

Spoke Hole: 28, 32, 36

Axle Material: Cr-Mo

Freehub Body: Cr-Mo 3 pawls x 1 spring w/Shimano 11sp, MS
12sp or Sram XD cassette

Sealed Bearings (SB): 4pcs

Recommended for Cargo bike

OPTIONS

CL	QL-TH2MR	IS6	QL-TH1MR	Shimano 11SP
CL	QL-TH2XR	IS6	QL-TH1XR	Sram XD
CL	QL-TH2SR	IS6	QL-TH1SR	MS 12SP

"No 36H for Center Lock model "



OEM

ENDURO

ROAD

TECHNOLOGIES

DYNAMO

COASTER BRAKE

INTER-3 GEAR

ROAD DISC

Front ID Ø12 x 100mm / Rear ID Ø12 x 142mm



OEM

ENDURO

ROAD

TECHNOLOGIES

DYNAMO

COASTER BRAKE

INTER-3 GEAR



QL-THCF

WEIGHT:146g

Spoke Hole:24, 28, 32

Axle Material: AL7075

Sealed Bearings (SB): 2pcs



QL-THCMR

WEIGHT:290g

Spoke Hole:24, 28, 32

Axle Material: AL7075

Freehub Body:AL7075 3 pawls x 1 spring w/Shimano 11sp,
Sram XDR, or Campy cassette

Sealed Cartridge Bearings (SB): 4pcs

OPTIONS

CL **QL-THCMR** Shimano 11SP

CL **QL-THCDR** Sram XDR

CL **QL-THCCR** Campy

CL **QL-THCYR** Campy N3W

ROAD Front ID Ø5 x 100 x 108mm / Rear ID Ø5 x 130 x 140mm



OEM

ENDURO

ROAD

TECHNOLOGIES

DYNAMO

COASTER BRAKE

INTER-3 GEAR



QL-2VDF

WEIGHT:74g

Spoke Hole:24, 28, 32

Axle Material: AL7075

Sealed Cartridge Bearings (SB): 2pcs



QL-4V7MR

WEIGHT:248g

Spoke Hole:24, 28, 32

Axle Material: AL7075

Freehub Body: AL7075 4 pawls x 4 springs w/ Shimano 11sp,
Sram XDR, or Campy cassette

Sealed Cartridge Bearings (SB): 4pcs

OPTIONS

QL-4V7MR	Shimano 11SP
QL-4V7DR	Sram XDR
QL-4V7CR	Campy
QL-4V7YR	N3W



TECHNOLOGIES



OEM

The internal of dynamo hub contains a high and powerful ndfeb magnet. When this magnet encounters the heat element, it will cause a demagnetization effect. Therefore, the temperature will have an impact on the dynamo hub. 5Km/h, 15km/h, 25km/h, 35km/h, 45km/h are the measurements of temperature after a journey of 100 km.

ENDURO

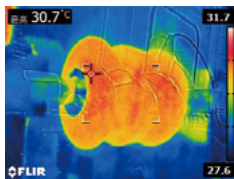
ROAD

TECHNOLOGIES

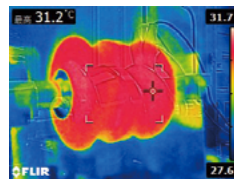
DYNAMO

COASTER BRAKE

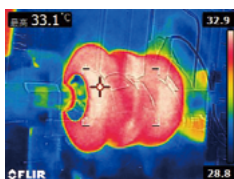
INTER-3 GEAR



5KM/HR- RIDING 100KM



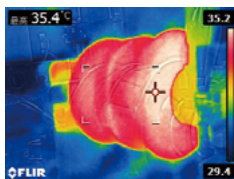
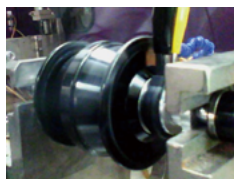
15KM/HR- RIDING 100KM



45KM/HR- RIDING 100KM



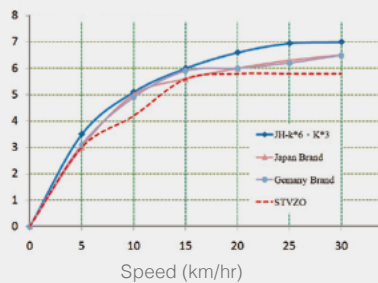
35KM/HR- RIDING 100KM



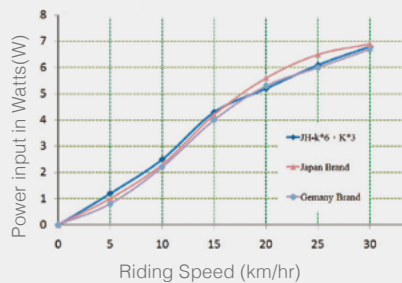
25KM/HR- RIDING 100KM

POWER TEST

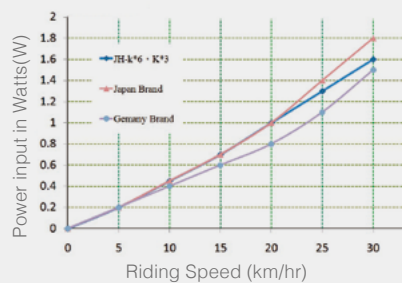
WHEEL STVZO VOLTAGE OUTPUT TEST



LIGHT SWITCHED ON



LIGHTS SWITCHED OFF



REGULAR DYNAMO HUB



JH-KD5F

WEIGHT:453g

Brake type: Disc Brake

Axle Type: QR 15 / 12 / 5.2mm (one hub can be compatible with 3 different end cap)

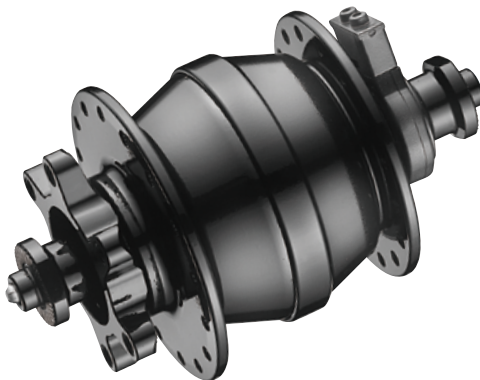
Spoke Holes: 28H / 32H / 36H

O.L.D: 100mm

Sealed Cartridge Bearing (SB): 2pcs

Option: CL: **JH-KC5F**

Boost 4in1



JH-KD6F

WEIGHT:415g

Brake Type: Disc Brake

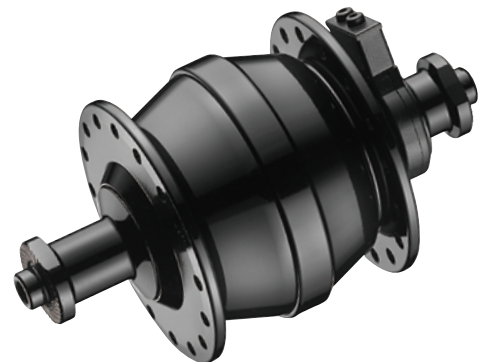
Axle Type: QR

Spoke Holes: 32H / 36H

O.L.D: 100mm

Sealed Cartridge Bearing(SB): 2pcs

Option: CL: **JH-KC6F**



JH-KV6F

WEIGHT:395g

Brake Type: V-Brake

Axle Type: QR

Spoke Holes: 32H / 36H

O.L.D: 100mm

Sealed Cartridge Bearing(SB): 2pcs



OEM

ENDURO

ROAD

TECHNOLOGIES

DYNAMO

COASTER BRAKE

INTER-3 GEAR



COASTER BRAKE



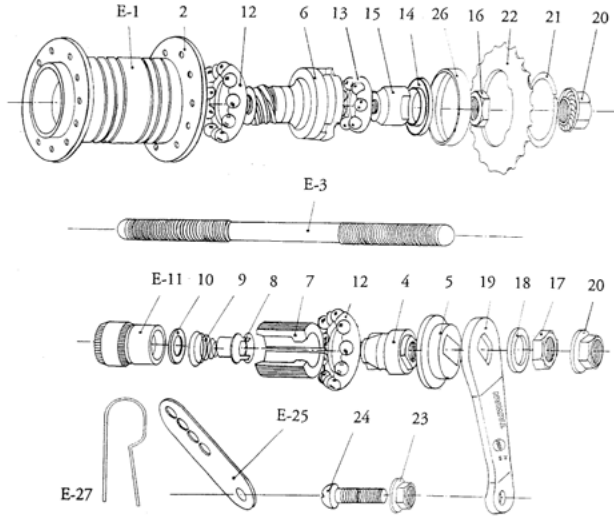
TEST APPROVED BY CHC, STANDARD BSEN14764,
CONTRACT NO.11060303B

All complete with sprocket(E-22) & associated parts(E-20, 21, 23, 24, 25, 26), additional accessory will be upcharge
Axle length options: 3/8"x24Tx110x150, 155, 163, 170, 175.

Sprocket teeth options: same price for choosing 14T, 16T, 18T, 19T, if 20T, 22T will be upcharge.

PART NO. DESCRIPTION

E-1	Shell
E-2	Flange
E-3	Axle
E-4	Brake cone
E-5	Dust cap
E-6	Driver
E-7	Brake shoe
E-8	Spring holder
E-9	Clutch spring
E-10	Clutch washer
E-11	Clutch cone
E-12	Ball retainer 7/32" x 9 pcs
E-13	Ball retainer 1/4" x 7 pcs
E-14	Cone cover
E-15	Cone
E-16	Lock nut (a) 17x9mm
E-17	Lock nut (b) 17x7mm
E-18	Washer
E-19	Brake arm
E-20	Flange nut 3/8" x 24t
E-21	Lock ring
E-22	Sprocket 14t, 16t, 18t, 19t, 20t, 22t
E-23	Clip nut
E-24	Clip screw
E-25	Arm clip
E-26	Dust cap
E-27	Bend arm clip



OEM

ENDURO

ROAD

TECHNOLOGIES

DYNAMO

COASTER BRAKE

INTER-3 GEAR

CONVERTER KIT



QL-307R-T

WEIGHT: 798g

Flange PCD: 48.5mm

Flange distance: 47.4mm

INTER-3 GEAR HUB

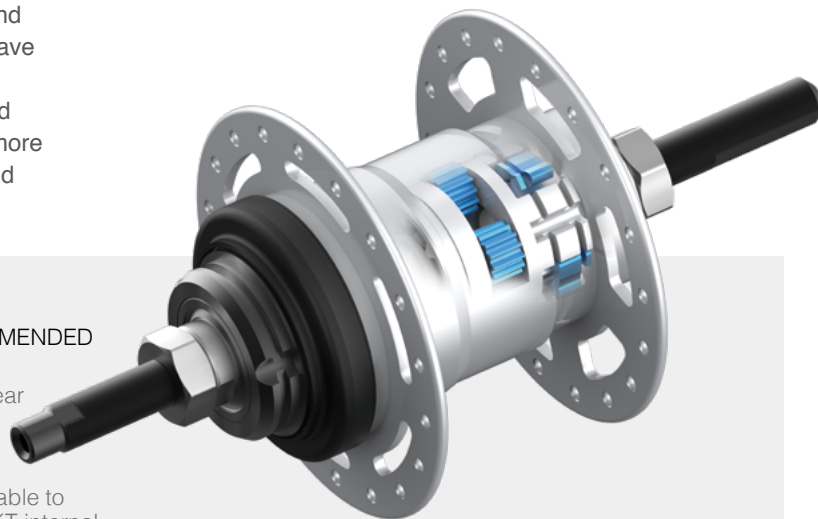
The proliferation of bicycle commuters and the associated bike-sharing programs, have resulted in an upturn in demand for the various components specifically designed for the commuter bicycle market. None more so than high quality, performance-focused internal-gear hub systems.

CAUTION!!

INTERNAL GEARED HUB IS NOT RECOMMENDED FOR E-BIKE WITH MID-DRIVE MOTOR

The maximum torque that applies on the rear sprocket depends on your selection of the gear ratio and the torque from the mid-drive motor.

Due to all possible combination, KT is not able to tell if certain mid-drive motors can fit with KT internal gear hub.



OEM

ENDURO

ROAD

TECHNOLOGIES

DYNAMO

COASTER BRAKE

INTER-3 GEAR



FR-H13R

Brake Type: Disc-Brake
Weight: 1050g
O.L.D: 135mm



FR-H23R

Brake Type: Drum-Brake / V-Brake
Weight: 940g
O.L.D: 120mm

PARTS

PARTS

Flange nut, Cap nut, Safety washer,
Lock-ring, Push rod
UPCHARGE FOR Cr-Mo SPROCKET,
available for 16T, 18T, 20T



TAIWAN 
KUN TENG INDUSTRY CO., LTD.