

2026  
OEM



KUN TENG INDUSTRY

since 1947



OEM

ENDURO BOOST P04

ENDURO MTB P05

ROAD DISC P06

ROAD P07

NEW P08

SPORT DYNAMO HUB P09

MICRO SPLINE  
12SP 3X1



OEM

Kun Teng Industry Co., Ltd., founded by Mr. Kun Teng Chen, is one of the first-generation professional hub manufacturers in Taiwan's bicycle industry. The history is as follows:

- 1947** – Established Feng Rong Enterprise, producing screws and drum-brake hubs. Main market: Southeast Asia.
- 1966** – Expanded the factory and established Kun Teng Industry Co., Ltd., producing steel hubs, alloy hubs (thread type hub), and coaster brakes. Monthly sales reached 1,000,000 pieces, with the main market being the United States.
- 1989** – Started producing alloy cassette hubs and entered the European market.
- 2012** – Began producing dynamo hubs, with Europe as the main market.
- 2018** – Began restructuring product designs to enhance product lifespan, meeting the quality requirements for e-bikes and MTB.
- 2019** – Started producing 3-speed internal gear hubs, with Europe as the main market.
- 2021** – Began mass production of ratchet system hubs, with the main markets being the United States and Europe.
- 2023** – Started mass production of 612 POE hubs for MTB, with the main market being the United States.

# ENDURO BOOST Front ID Ø15 x 110mm / Rear ID Ø12 x 148mm



## QL-TH8F

**WEIGHT:229g**

Spoke Hole:28, 32, 36  
 Option:Center Lock: QL-TH9F  
 Axle Material: AL7075  
 Sealed Cartridge Bearings(SB): 2pcs

### ENDURO BOOST



## QL-TH8MR

**WEIGHT:401g**

Spoke Hole:28, 32, 36  
 Axle Material: AL7075  
 Freehub Body: Cr-Mo 3 pawls x 1 spring w/Shimano 11sp, MS 12sp or Sram XD cassette  
 Sealed Bearings(SB): 4pcs

**Recommended for Cargo bike**

**OPTIONS**

CL	<b>QL-TH9MR</b>	IS6	<b>QL-TH8MR</b>	Shimano 11SP
CL	<b>QL-TH9XR</b>	IS6	<b>QL-TH8XR</b>	Sram XD
CL	<b>QL-TH9SR</b>	IS6	<b>QL-TH8SR</b>	MS 12SP

"No 36H for Center Lock model "

# ENDURO MTB Front ID Ø15 x 100mm / Rear ID Ø12 x 142mm



## QL-THHF

**WEIGHT:227g**

Spoke Hole:28, 32, 36  
 Option: Center Lock: QL-TH2F  
 Axle Material: AL7075  
 Sealed Bearings(SB): 2pcs

### ENDURO MTB



## QL-TH1MR

**WEIGHT: 398g**

Spoke Hole:28, 32, 36  
 Axle Material: AL7075  
 Freehub Body: Cr-Mo 3 pawls x 1 spring w/Shimano 11sp, MS 12sp or Sram XD cassette  
 Sealed Bearings(SB): 4pcs

**Recommended for Cargo bike**

**OPTIONS**

CL	<b>QL-TH2MR</b>	IS6	<b>QL-TH1MR</b>	Shimano 11SP
CL	<b>QL-TH2XR</b>	IS6	<b>QL-TH1XR</b>	Sram XD
CL	<b>QL-TH2SR</b>	IS6	<b>QL-TH1SR</b>	MS 12SP

"No 36H for Center Lock model "



OEM

ENDURO

ROAD

NEW

DYNAMO

4



OEM

ENDURO

ROAD

NEW

DYNAMO

5

# ROAD DISC

Front ID Ø12 x 100mm / Rear ID Ø12 x 142mm



# ROAD

Front ID Ø5 x 100 x 108mm / Rear ID Ø5 x 130 x 140mm



OEM

OEM

ENDURO

ENDURO

ROAD

ROAD

NEW

NEW

DYNAMO

DYNAMO

6

7



## QL-THCF

**WEIGHT:146g**

Spoke Hole:24, 28, 32

Axle Material: AL7075

Sealed Bearings(SB): 2pcs



## QL-2VDF

**WEIGHT:74g**

Spoke Hole:24, 28, 32

Axle Material: AL7075

Sealed Cartridge Bearings(SB): 2pcs



## QL-THCMR

**WEIGHT:290g**

Spoke Hole:24, 28, 32

Axle Material: AL7075

Freehub Body:AL7075 3 pawls x 1 spring w/Shimano 11sp,  
Sram XDR, or Campy cassette

Sealed Cartridge Bearings(SB): 4pcs

### OPTIONS

CL	<b>QL-THCMR</b>	Shimano 11SP
CL	<b>QL-THCDR</b>	Sram XDR
CL	<b>QL-THCCR</b>	Campy
CL	<b>QL-THCYR</b>	Campy N3W



## QL-4V7MR

**WEIGHT:248g**

Spoke Hole:24, 28, 32

Axle Material: AL7075

Freehub Body: AL7075 4 pawls x 4 springs w/ Shimano 11sp,  
Sram XDR, or Campy cassette

Sealed Cartridge Bearings(SB): 4pcs

### OPTIONS

<b>QL-4V7MR</b>	Shimano 11SP
<b>QL-4V7DR</b>	Sram XDR
<b>QL-4V7CR</b>	Campy
<b>QL-4V7YR</b>	N3W



# DURABILITY PROVEN FRONT HUB FOR E-BIKE



## QL-MHDF

**WEIGHT:361g**

Spoke Hole: 13G/32, 36  
 Axle system: 3/8" axle  
 O.L.D: 100mm  
 Axle Material: Steel  
 Flange PCD: 58mm  
 Sealed Cartridge Bearings(SB): 2pcs



## QL-THHF

**WEIGHT:227g**

Spoke Hole:14G/28, 32, 36  
 Axle system: QR, Thru axle 12 / 15mm  
 O.L.D: 100mm  
 Axle Material: AL7075  
 Flange PCD: 58mm  
 Sealed Cartridge Bearings(SB): 2pcs

### Features:

Sealed cartridge bearings for durability

Support for 3/8", QR, Thru axle 12mm and 15mm system

Recommends to E-city, E-bike, and E-Cargo

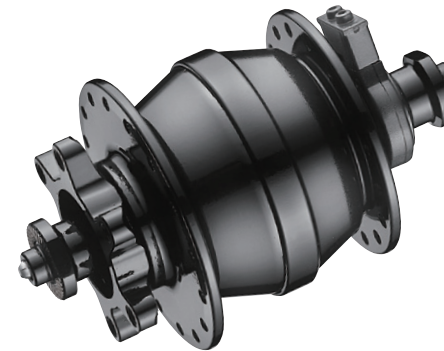
# REGULAR DYNAMO HUB



## JH-KD5F

**WEIGHT:453g**

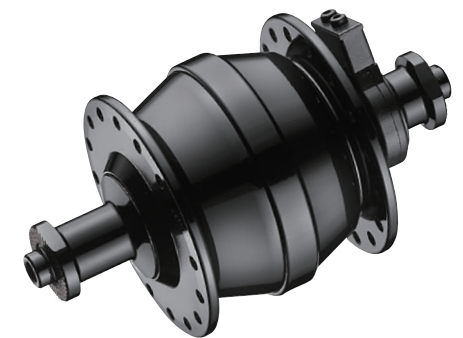
Brake type: Disc Brake  
 Axle Type: QR 15 / 12 / 5.2mm (one hub can be compatible with 3 different end cap)  
 Spoke Holes: 28H / 32H / 36H  
 O.L.D: 100mm  
 Sealed Cartridge Bearing(SB): 2pcs  
 Option: CL: **JH-KC5F**



## JH-KD6F

**WEIGHT:415g**

Brake Type: Disc Brake  
 Axle Type: QR  
 Spoke Holes: 32H / 36H  
 O.L.D: 100mm  
 Sealed Cartridge Bearing(SB): 2pcs  
 Option: CL: **JH-KC6F**



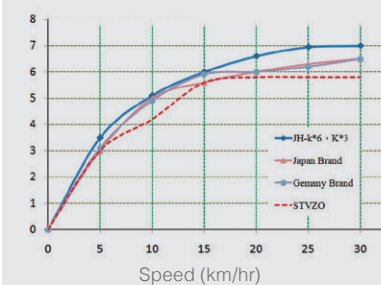
## JH-KV6F

**WEIGHT:395g**

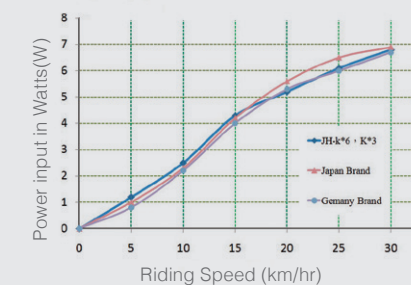
Brake Type: V-Brake  
 Axle Type: QR  
 Spoke Holes: 32H / 36H  
 O.L.D: 100mm  
 Sealed Cartridge Bearing(SB): 2pcs

## POWER TEST

WHEEL STVZO VOLTAGE OUTPUT TEST



LIGHT SWITCHED ON



LIGHTS SWITCHED OFF

