

2026  
AM



*since 1947*





**TECHNOLOGY** P04

**RATCHET SYSTEM** P06

**MTB** P10

FAT BIKE & SINGLE SPEED \_ P10

DH&FREERIDE \_ P11

BOOST\_ P12

MTB & GRAVEL \_ P13

**ROAD** P14

ROAD DISC \_ P14

ROAD \_ P15

**PARTS** P22

QUICK RELEASE \_ P16

FREEHUB BODY \_ P18

SPARE PARTS \_ P20

OTHER \_ P21



Kun Teng Industry Co., Ltd., founded by Mr. Kun Teng Chen, is one of the first-generation professional hub manufacturers in Taiwan's bicycle industry. The history is as follows:

- 1947** – Established Feng Rong Enterprise, producing screws and drum-brake hubs. Main market: Southeast Asia.
- 1966** – Expanded the factory and established Kun Teng Industry Co., Ltd., producing steel hubs, alloy hubs (thread type hub), and coaster brakes. Monthly sales reached 1,000,000 pieces, with the main market being the United States.
- 1989** – Started producing alloy cassette hubs and entered the European market.
- 2012** – Began producing dynamo hubs, with Europe as the main market.
- 2018** – Began restructuring product designs to enhance product lifespan, meeting the quality requirements for e-bikes and MTB.
- 2019** – Started producing 3-speed internal gear hubs, with Europe as the main market.
- 2021** – Began mass production of ratchet system hubs, with the main markets being the United States and Europe.
- 2023** – Started mass production of 612 POE hubs for MTB, with the main market being the United States.



# TECHNOLOGIES

## RUBBER COVER

**NEW ARRIVAL**  
SEE WHAT'S NEW

### RUBBER COVER



#### Features:

##### Cost down & fast delivery

- Sea Freight: Wheel sets (without freehub bodies), lead time: 5 months
- Air Freight: Freehub body kits, lead time: 1.5 months

##### Meeting Urgent Demands

- Just-in-time adoption of freehub bodies to satisfy urgent customer needs
- Optimized solution for reducing wheel inventory costs

##### Easy Drive Chain Compatibility

- Switch freehub bodies without needing to reapply grease

##### Eco-Friendly Rubber Covers

- Made with recyclable materials for sustainability



Introduction to KTi's rubber cover video

## FOR REAR HUB

### X-12

For Rear Hub

Compatible with 12mm Thru axle.  
Only change end cap to fit.



- 10mm Thru axle: 135mm
- 12mm Thru axle: 142mm

5mm quick release  
x135 x145mm

## FOR FRONT HUB

### Convertible



IDØ5.2mm IDØ12mm IDØ15mm

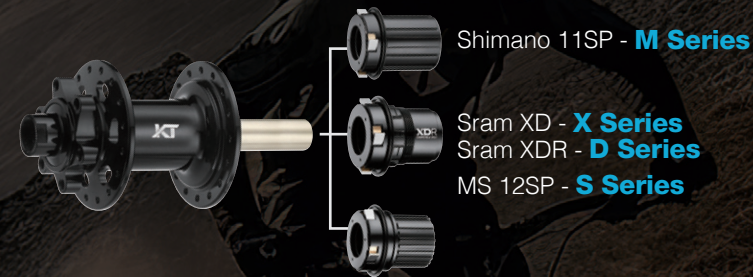
Converter end cap from ID5.2 to ID12mm, 15mm

## ONE HUB ALL SOLUTION



Only change cassette body.

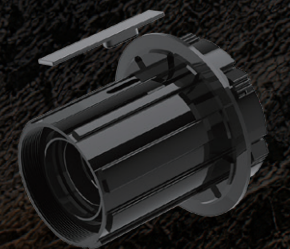
- RATCHET SYSTEM
- 6 Pawl 6 Springs 102T
- 4 Pawl 4 Springs
- 3 Pawl 1 Spring



Shimano 11SP - **M Series**

Sram XD - **X Series**  
Sram XDR - **D Series**  
MS 12SP - **S Series**

## ANTI BITE



#### FOR MTB SELECTION

Press-fit Cr-Mo plate into Alloy cassette body prevent from free wheel bite into.  
• 4 Pawl 4 Springs

## RATCHET SYSTEM



## 612 POE 6 PAWLS + 6 SPRINGS



102 teeth  $\phi = X + 0.09$   $X, \delta > 0$

## PATENT NO.

- TW 1252815
- US 7121394B2
- DE 202005000114.7
- NL 1030207
- CN 201031894Y
- DE 202007005699.0

## 102 POE 6 PAWLS + 6 SPRINGS

The most popular hub for all mtb system.



102T



# RATCHET SYSTEM FOR MTB



## QL-DC8F

Spoke Hole: 14G/28, 32, 36  
 Axle System: 12 / 15mm Thru Axle x110mm  
 O.L.D.: 110mm  
 Axle Material: AL7075  
 Flange PCD: 58mm  
 Sealed Cartridge Bearings(SB): 2pcs  
 Weight: 171g

### OPTIONS

CL	<b>QL-DC8F</b>	IS6	<b>QL-DDYF</b>	110mm
CL	<b>QL-DC4F</b>	IS6	<b>QL-DDXF</b>	100mm



## QL-DC9MR

Spoke Hole: 14G/28, 32, 36  
 Axle System: 12mm Thru Axle x148mm  
 O.L.D.: 148mm  
 Axle Material: AL7075  
 Flange PCD: 58mm  
 Sealed Cartridge Bearings(SB): 4pcs  
 Weight: 298g

### OPTIONS

GRAVEL&MTB 12x142mm				
CL	<b>QL-DC5MR</b>	IS6	<b>QL-DD5MR</b>	Shimano 11SP
CL	<b>QL-DC5XR</b>	IS6	<b>QL-DD5XR</b>	Sram XD
CL	<b>QL-DC5SR</b>	IS6	<b>QL-DD5SR</b>	MS 12SP
BOOST 12x148mm				
CL	<b>QL-DC9MR</b>	IS6	<b>QL-DD9MR</b>	Shimano 11SP
CL	<b>QL-DC9XR</b>	IS6	<b>QL-DD9XR</b>	Sram XD
CL	<b>QL-DC9SR</b>	IS6	<b>QL-DD9SR</b>	MS 12SP



# RATCHET SYSTEM FOR MTB



## QL-DCTF

Spoke Hole: 14G/28  
 Axle System: 12 / 15mm Thru Axle x110mm  
 O.L.D.: 110mm  
 Axle Material: AL7075  
 Flange PCD: 46mm/41mm  
 Sealed Cartridge Bearings(SB): 2pcs  
 Weight: 153g

### OPTIONS

CL	<b>QL-DCVF</b>	IS6	<b>QL-DDVF</b>	100mm
CL	<b>QL-DCTF</b>	IS6	<b>QL-DDTF</b>	110mm



## QL-DCTXR

Spoke Hole: 14G/28  
 Axle System: 12mm Thru Axle x148mm  
 O.L.D.: 148mm  
 Axle Material: AL7075  
 Flange PCD: L: 38.1/39.8mm  
 R: 50/52mm  
 Sealed Cartridge Bearings(SB): 4pcs  
 Weight: 276g

### OPTIONS

12x148mm				
CL	<b>QL-DCTMR</b>	IS6	<b>QL-DDTMR</b>	Shimano 11SP
CL	<b>QL-DCTXR</b>	IS6	<b>QL-DDTXR</b>	Sram XD
CL	<b>QL-DCTSR</b>	IS6	<b>QL-DDTSR</b>	MS 12SP
12x142mm				
MTB & GRAVEL		MTB		
CL	<b>QL-DCVMR</b>	IS6	<b>QL-DDVMR</b>	Shimano 11SP
CL	<b>QL-DCVXR</b>	IS6	<b>QL-DDVXR</b>	Sram XD
CL	<b>QL-DCVSR</b>	IS6	<b>QL-DDVSR</b>	MS 12SP



AM

TECHNOLOGY

RATCHET SYSTEM

MTB

ROAD

PARTS



AM

TECHNOLOGY

RATCHET SYSTEM

MTB

ROAD

PARTS



# RATCHET SYSTEM FOR ROAD DISC



# RATCHET SYSTEM FOR ROAD



AM

TECHNOLOGY

RATCHET SYSTEM

MTB

ROAD

PARTS



AM

TECHNOLOGY

RATCHET SYSTEM

MTB

ROAD

PARTS



## QL-DW5F

Spoke Hole: 14G/24, 28  
 Axle System: 12mm Thru Axle x100mm  
 O.L.D.: 100mm  
 Axle Material: AL7075  
 Flange PCD: 46/42.5mm  
 Sealed Cartridge Bearings(SB): 2pcs  
 Weight: 107g



## QL-ZN1F

Spoke Hole: 14G/20, 24  
 Axle System: 5.2mm quick release x100 x108mm  
 O.L.D.: 100mm  
 Axle Material: AL7075  
 Flange PCD: 32mm  
 Sealed Cartridge Bearings(SB): 2pcs  
 Weight: 91g



## QL-DCSDR

Spoke Hole: 14G/24, 28  
 Axle System: 12mm Thru Axle x142mm  
 O.L.D.: 142mm  
 Axle Material: AL7075  
 Flange PCD: L: 36/38mm  
                   R: 50/52mm  
 Sealed Cartridge Bearings(SB): 4pcs  
 Weight: 225g

### OPTIONS

QL-DCSMR	Shimano 11SP
QL-DCSDR	SRAM XDR
QL-DCSCR	Campy
QL-DCSYR	Campy N3W



## QL-DR4MR

Spoke Hole: 14G/20, 24  
 Axle System: 5.2mm quick release x130 x140mm  
 O.L.D.: 130mm  
 Axle Material: AL7075  
 Flange PCD: L: 39.8/40.2mm  
                   R: 50/52mm  
 Sealed Cartridge Bearings(SB): 4pcs  
 Weight: 248g

### OPTIONS

QL-DR4MR	Shimano 11SP
QL-DR4DR	SRAM XDR
QL-DR4CR	Campy
QL-DR4YR	Campy N3W





# MTB BOOST



## QL-S3CF

Spoke Hole: 14G/28, 32, 36  
 Axle System: 12 / 15mm Thru axle x110mm  
 O.L.D.: 110mm  
 Axle Material: AL7075  
 Flange PCD: 58mm  
 Sealed Cartridge Bearings(SB): 2pcs  
 Weight: 152g  
 Option: IS6: **QL-S37F**  
 Option: SUPER BOOST: IS6: **QL-DHWF**  
 20mm x110mm Thru-axle

### Boost



## QL-4ATSR

Spoke Hole: 14G/28, 32, 36  
 Axle System: 12mm Thru axle x148mm  
 O.L.D.: 148mm  
 Axle Material: AL7075  
 Flange PCD: 58mm  
 Sealed Cartridge Bearings(SB): 4pcs  
 Weight: 308g  
 Freehub Body: AL7075 4 pawls 4 springs, compatible w/Shimano or Sram XD cassette

#### OPTIONS

CL	<b>QL-4ATMR</b>	IS6	<b>QL-4AEMR</b>	Shimano 11SP
CL	<b>QL-4ATXR</b>	IS6	<b>QL-4AEXR</b>	Sram XD
CL	<b>QL-4ATSR</b>	IS6	<b>QL-4AESR</b>	MS 12SP

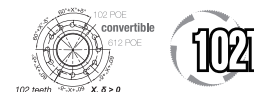


# MTB & GRAVEL



## QL-S3GF

Spoke Hole: 14G/28, 32, 36  
 Axle System: 5mm quick release x100 x108mm,  
 12 / 15mm Thru axle x100mm  
 O.L.D.: 100mm  
 Axle Material: AL7075  
 Flange PCD: 58mm  
 Sealed Cartridge Bearings(SB): 2pcs  
 Weight: 144g  
 Option: Center Lock: **QL-SLXF**



## QL-Y74TXR

Spoke Hole: 14G/28, 32, 36  
 Axle System: 5mm quick release x135 x145mm,  
 12mm Thru axle x142mm  
 Axle Material: AL7075  
 Flange PCD: 58mm / 64mm  
 Sealed Cartridge Bearings(SB): 4pcs  
 Weight: 302g  
 Freehub Body: AL7075 6 pawls 6 springs, compatible w/Shimano or Sram XD cassette

#### OPTIONS

102 POE OPTIONS				
CL	<b>QL-Y43TMR</b>	IS6	<b>QL-Y74TMR</b>	Shimano 11SP
CL	<b>QL-Y43TXR</b>	IS6	<b>QL-Y74TXR</b>	Sram XD
CL	<b>QL-Y43TSR</b>	IS6	<b>QL-Y74TSR</b>	MS 12SP

612 POE OPTIONS				
CL	<b>QL-Y43WMR</b>	IS6	<b>QL-Y74WMR</b>	Shimano 11SP
CL	<b>QL-Y43TWR</b>	IS6	<b>QL-Y74WXR</b>	Sram XD
CL	<b>QL-Y43WSR</b>	IS6	<b>QL-Y74WSR</b>	MS 12SP

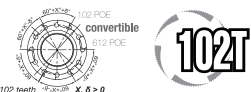


## QL-4S2SR

Spoke Hole: 14G/28, 32, 36  
 Axle System: 5mm quick release x135 x145mm,  
 12mm Thru axle x142mm  
 Axle Material: AL7075  
 Flange PCD: 58mm  
 Sealed Cartridge Bearings(SB): 4pcs  
 Weight: 290g  
 Freehub Body: AL7075 4 pawls 4 springs, compatible w/Shimano or Sram XD cassette

#### OPTIONS

CL	<b>QL-4S3MR</b>	IS6	<b>QL-4S2MR</b>	Shimano 11SP
CL	<b>QL-4S3XR</b>	IS6	<b>QL-4S2XR</b>	Sram XD
CL	<b>QL-4S3SR</b>	IS6	<b>QL-4S2SR</b>	MS 12SP



## QL-Y44TMR

Spoke Hole: 14G/28, 32, 36  
 Axle System: 12mm Thru axle x148mm  
 O.L.D.: 148mm  
 Axle Material: AL7075  
 Flange PCD: 58mm / 64mm  
 Sealed Cartridge Bearings(SB): 4pcs  
 Weight: 315g  
 Freehub Body: AL7075 6 pawls 6 springs, compatible w/Shimano or Sram XD cassette

#### OPTIONS

102 POE OPTIONS				
CL	<b>QL-Y44TMR</b>	IS6	<b>QL-Y77TMR</b>	Shimano 11SP
CL	<b>QL-Y44TXR</b>	IS6	<b>QL-Y77TXR</b>	Sram XD
CL	<b>QL-Y44TSR</b>	IS6	<b>QL-Y77TSR</b>	MS 12SP

612 POE OPTIONS				
CL	<b>QL-Y44WMR</b>	IS6	<b>QL-Y77WMR</b>	Shimano 11SP
CL	<b>QL-Y44WXR</b>	IS6	<b>QL-Y77WXR</b>	Sram XD
CL	<b>QL-Y44WSR</b>	IS6	<b>QL-Y77WSR</b>	MS 12SP





QL-TBZF



Spoke Hole: 14G/28, 32, 36  
 Axle System: 15mm Thru axle x150mm  
 Axle Material: AL7075  
 Flange PCD: 58mm  
 Sealed Cartridge Bearings(SB): 2pcs  
 Weight: 280g

OPTIONS

CL	<b>QL-TBCF</b>	15 x135mm
IS6	<b>QL-TBYF</b>	No CNC Disc

QL-DD7R



Spoke Hole: 14G/28, 32, 36  
 Axle System: 12mm Thru Axle x190mm / 197mm  
 Axle Material: AL7075  
 Flange PCD: 58mm  
 Sealed Cartridge Bearings(SB): 4pcs  
 Weight: 390g  
 Freehub body: Steel Shimano HG ratchet system

SINGLE SPEED



QL-THEF



Spoke Hole: 14G/28, 32,36  
 Axle System: 15mm thru Axle x 150mm  
 Axle Material: AL7075  
 Flange PCD: 58mm  
 Sealed Cartridge Bearings(SB): 2pcs  
 Weight: 238g

OPTIONS

IS6	<b>QL-THDF</b>	15 x135mm
-----	----------------	-----------

QL-THEMR



Spoke Hole: 14G/28, 32,36  
 Axle System: 12mm thru Axle x 190mm/197mm  
 Axle Material: AL7075  
 Flange PCD: 58mm  
 Sealed Cartridge Bearings(SB): 4pcs  
 Weight: 484g  
 Freehub body: Steel Shimano HG 3 pawls 1 spring

OPTIONS

IS6	<b>QL-THDMR</b>	12 x170/177mm
-----	-----------------	---------------

QL-DY9R

Spoke Hole: 14G/28, 32, 36  
 Axle System: 12mm Thru Axle x142mm  
 Axle Material: AL7075  
 Flange PCD: 58mm  
 Sealed Cartridge Bearings(SB): 4pcs  
 Weight: 335g  
 Freehub body: Steel Single speed ratchet system

OPTIONS

IS6	<b>QL-DY7R</b>	12x148mm
-----	----------------	----------

QL-TW1F



EXCHANGEABLE CONVERTER CAPS

Spoke Hole: 14G/32, 36  
 Axle System: 5mm quick release x100 x108mm,  
 9 / 15mm Thru axle x100mm,  
 20mm Thru axle x110mm

O.L.D.: 110mm  
 Axle Material: AL7075  
 Flange PCD: 58mm  
 Sealed Cartridge Bearings(SB): 2pcs  
 Weight: 215g  
 Option: IS6: **QL-TWEF** 15 x110mm BOOST



QL-41SMR

Spoke Hole: 14G/28, 32, 36  
 Axle System: 12mm Thru axle x150mm / 157mm  
 Axle Material: AL7075  
 Flange PCD: R: 58 / L: 64mm  
 Sealed Cartridge Bearings(SB): 4pcs  
 Weight: 317g  
 Freehub Body: AL7075 4 pawls 4 springs, compatible w/Shimano or Sram XD cassette

OPTIONS

IS6	<b>QL-41SMR</b>	Shimano 11SP
IS6	<b>QL-41SXR</b>	Sram XD
IS6	<b>QL-41SSR</b>	MS 12SP



QL-Y7DTMR

Spoke Hole: 14G/28, 32, 36  
 Axle System: 12mm Thru axle x150mm / 157mm  
 Axle Material: AL7075  
 Flange PCD: R: 58 / L: 64mm  
 Sealed Cartridge Bearings(SB): 4pcs  
 Weight: 326g  
 Freehub Body: AL7075 6 pawls 6 springs, compatible w/Shimano or Sram XD cassette

OPTIONS

102 POE OPTIONS		
IS6	<b>QL-Y7DTMR</b>	Shimano 11SP
IS6	<b>QL-Y7DTXR</b>	Sram XD
IS6	<b>QL-Y7DTSR</b>	MS 12SP
612 POE OPTIONS		
IS6	<b>QL-Y7DWMR</b>	Shimano 11SP
IS6	<b>QL-Y7DWXR</b>	Sram XD
IS6	<b>QL-Y7DWSR</b>	MS 12SP





# ROAD DISC



## QL-4W5F

Spoke Hole: 14G/24, 28  
 Axle System: 5mm quick release x100 x108mm,  
 12mm Thru axle x100mm  
 O.L.D.: 100mm  
 Axle Material: AL7075  
 Flange PCD: 40mm  
 Sealed Cartridge Bearings(SB): 2pcs  
 Weight: 107g



## QL-4W5MR

Spoke Hole: 14G/24, 28  
 Axle System: 5mm quick release x135 x145mm,  
 12mm Thru axle x142mm  
 O.L.D.: 142mm  
 Axle Material: AL7075  
 Flange PCD: L: 40 / R: 58mm  
 Sealed Cartridge Bearings(SB): 4pcs  
 Weight: 234g  
 Freehub Body: AL7075 4 pawls 4 springs, compatible w/ Shimano  
 11sp, Sram XDR, or Campy cassette

### OPTIONS

CL	<b>QL-4W5MR</b>	Shimano 11SP
CL	<b>QL-4W5DR</b>	Sram XDR
CL	<b>QL-4W5CR</b>	Campy
CL	<b>QL-4W5YR</b>	Campy N3W



## QL-SLXF

Spoke Hole: 14G/24, 28  
 Axle System: 5mm quick release x100 x108mm,  
 12mm Thru axle x100mm  
 O.L.D.: 100mm  
 Axle Material: AL7075  
 Flange PCD: 58mm  
 Sealed Cartridge Bearings(SB): 2pcs  
 Weight: 148g  
 Option: IS6: **QL-S3GF**



## QL-4VBMR

Spoke Hole: 14G/24, 28  
 Axle System: 5mm quick release x135 x145mm,  
 12mm Thru axle x142mm  
 O.L.D.: 142mm  
 Axle Material: AL7075  
 Flange PCD: 58mm  
 Sealed Cartridge Bearings(SB): 4pcs  
 Weight: 268g  
 Freehub Body: AL7075 4 pawls 4 springs, compatible w/ Shimano  
 11sp, Sram XDR, or Campy cassette

### OPTIONS

CL	<b>QL-4VBMR</b>
CL	<b>QL-4VBDR</b>
CL	<b>QL-4VBCR</b>
CL	<b>QL-4VBYR</b>

# ROAD



## QL-ZN1F

Spoke Hole: 14G/20  
 Axle System: 5mm quick release  
 Axle Material: AL7075  
 Sealed Cartridge Bearings(SB): 2pcs  
 Weight: 87g



## QL-4NAMR

Spoke Hole: 14G/20, 24  
 Axle System: 5mm quick release  
 Axle Material: AL7075  
 Sealed Cartridge Bearings(SB): 4pcs  
 Weight: 230g  
 Freehub Body: AL7075 4 pawls 4 springs, compatible w/ Shimano  
 11sp, Sram XDR, or Campy cassette

### OPTIONS

<b>QL-4NADR</b>	Sram XDR
<b>QL-4NACR</b>	Campy
<b>QL-4NAYR</b>	Campy N3W



## QL-2VDF

Spoke Hole: 14G/20  
 Axle System: 5mm quick release  
 Axle Material: AL7075  
 Flange PCD: 32mm  
 Sealed Cartridge Bearings(SB): 2pcs  
 Weight: 75g

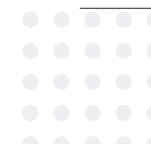


## QL-4V7MR

Spoke Hole: 14G/20, 24  
 Axle System: 5mm quick release  
 Axle Material: AL7075  
 Sealed Cartridge Bearings(SB): 4pcs  
 Weight: 248g  
 Freehub Body: AL7075 4 pawls x 4 springs w/ Shimano 11sp, Sram  
 XDR, or Campy cassette

### OPTIONS

<b>QL-4V7DR</b>	Sram XDR
<b>QL-4V7CR</b>	Campy
<b>QL-4V7YR</b>	Campy N3W



AM

TECHNOLOGY

RATCHET SYSTEM

MTB

ROAD

PARTS



AM

TECHNOLOGY

RATCHET SYSTEM

MTB

ROAD

PARTS



# PARTS QUICK RELEASE



AM

TECHNOLOGY



**QL-205MO [R]** 62g, W/ tool-free lever  
**QL-204MO [F]** 56g, W/ tool-free lever

RATCHET SYSTEM



**QL-205MU [R]** 44g (M12xP1.5x180mm)  
**QL-204MU [F]** 32g (M12xP1.5x123mm)  
 53g (M15xP1.5x125mm)

MTB

ROAD

PARTS



**QL-205SH [R]**  
 Option: With Nut **205SK**, For ID12, 105g  
**QL-204SH [F]**  
 Option: With Nut **204SK**, For ID12 / 15, 66g

Available for Shimano Syntace, Sram, DT Swiss, Fox Drop out system



**QL-205FB [R]** 44g (M12xP1.5x163.5mm)  
**QL-204FB [F]** 36g (M12xP1.5x121.5mm)

NEW (Patented)



**QL-205SV [R]** 52g  
**QL-204SV [F]** 43g

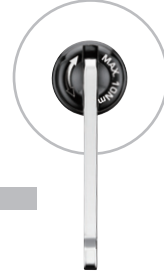
Built-in tool  
 Available for Shimano Syntace, Sram, DT Swiss, Fox Drop out system



**QL-205RE [R]** 64g  
**QL-204RE [F]** 58g



**QL-205VV [R]** 52g  
**QL-204VV [F]** 47g



Titanium material



**QL-205VM [R]** 27g, Titanium  
**QL-204VM [F]** 25g, Titanium

**QL-205VN [R]** 36g Cr-Mo  
**QL-204VN [F]** 32g Cr-Mo



**QL-205YA [R]** 60g  
**QL-204YA [F]** 55g



**QL-205N [R]** 64g  
**QL-204N [F]** 58g



AM

TECHNOLOGY



**QL-205V3 [R]** 56.5g  
**QL-204V3 [F]** 50.5g

RATCHET SYSTEM



**QL-205BZ 10MM [R]** 111g  
**QL-204BZ 9MM [F]** 80g

MTB

ROAD

PARTS



**QL-205C [R]** 100g  
**QL-204C [F]** 95g



**QL-205FK [R]** 35g  
**QL-204FK [F]** 30g



# PARTS FREEHUB BODY

**DD SERIES (RATCHET SYSTEM) | FOR BOOST/MTB/GRAVEL/ROAD**



**SRAM XD/XDR RATCHET SYSTEM Freehub Body**  
AL7075 RATCHET SYSTEM for SRAM XD/XDR.  
**Cr-Mo FHB Available**



**Shimano MS RATCHET SYSTEM Freehub Body**  
AL7075 RATCHET SYSTEM for Micro Spline 12sp.  
**Cr-Mo FHB Available**



**Shimano RATCHET SYSTEM Freehub Body**  
AL7075 RATCHET SYSTEM for Shimano 11sp.  
**Cr-Mo FHB Available**



## ENDURO HUB

**4X4 SERIES | FOR BOOST / MTB / ROAD / ROAD DISC / GRAVEL**



**SRAM XD / XDR 4X4**  
Cr-Mo 4 springs & 4 pawls for SRAM XD / XDR.



**Shimano MS 4X4 Freehub Body**  
Cr-Mo 4 springs & 4 pawls for Micro Spline 12sp.



**Shimano 4X4 Freehub Body**  
Cr-Mo 4 springs & 4 pawls for Shimano 11sp.

## REGULAR

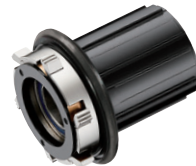
**612 POE SEREIS (6X6 SERIES) | FOR BOOST / MTB/ DH / GRAVEL**



**SRAM XD 612 POE Freehub Body**  
STEEL + AL7075 6 springs & 6pawls 612 POE for SRAM XD



**Shimano MS 612 POE Freehub Body**  
Freehub Body  
STEEL + AL7075 6 springs & 6pawls 612 POE form Micro Shimano

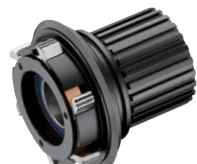


**Shimano 612 POE Freehub Body**  
STEEL + AL7075 6 springs & 6pawls 612 POE form Shimano 11sp

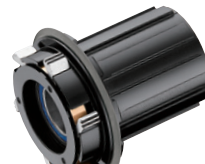
**102 POE SERIES (6X6 SERIES) | FOR BOOST / MTB / DH / GRAVEL**



**SRAM XD 102 POE Freehub Body**  
AL7075 6 springs & 6pawls 102 POE for SRAM XD



**Shimano MS 102 POE Freehub Body**  
AL7075 6 springs & 6pawls 102 POE form Micro Shimano



**Shimano 102 POE Freehub Body**  
AL7075 6 springs & 6pawls 102 POE form Shimano 11sp

**4X4 SERIES | FOR MTB / ROAD / ROAD DISC / GRAVEL**



**SRAM XD / XDR 4X4**  
AL7075 4 springs & 4 pawls for SRAM XD / XDR.



**Shimano MS 4X4 Freehub Body**  
AL7075 or Cr-Mo 4 springs & 4 pawls 102T for Micro Spline 12sp.



**Shimano 4X4 Freehub Body**  
AL7075 or Cr-Mo 4 springs & 4 pawls for Shimano 11sp.



AM

TECHNOLOGY

RATCHET SYSTEM

MTB

ROAD

PARTS



AM

TECHNOLOGY

RATCHET SYSTEM

MTB

ROAD

PARTS





## CONVERTER KIT

**FOR 9SP TO 1SP, ACCESSORY INCLUDING**

Sprocket, 2 Alloy spacers 13.5L & 20L, lock-ring & shim washer 1T

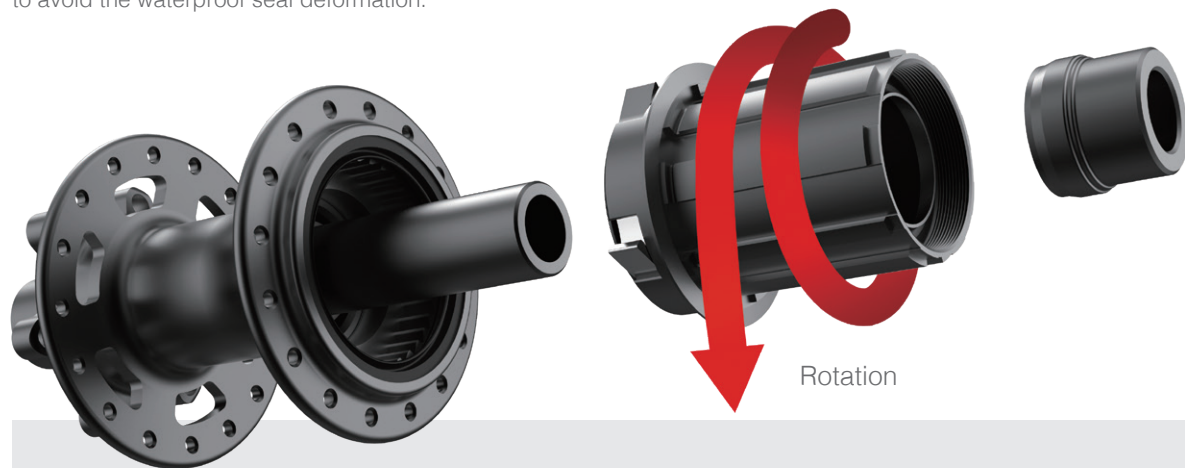
**Code no.**

- MCPAHY31200C5 (12T)
- MCPAHY313CP23 (13T)
- MCPAHY314CP23 (14T)
- MCPAHY316CP23 (16T)
- MCPAHY318CP23 (18T)



## FREEHUB BODY INSTALLATION GUIDE

Rotated push the cassette into hubshell (rotation must be anticlockwise), to avoid the waterproof seal deformation.



**CAUTION!!**

The installation of cassette body must be rotated anticlockwise to press into the hub shell. It may cause seal damage or deformation by pawls, and it might loss the water resistance and cause the friction when riding.

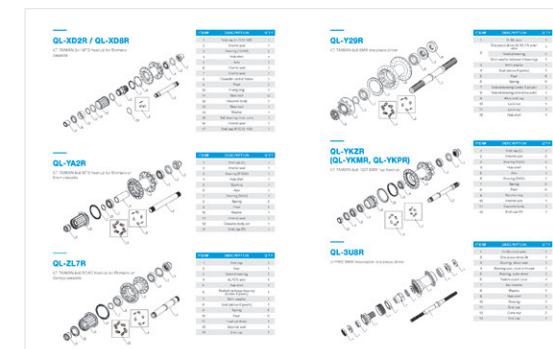
**PRODUCTION TRACEABILITY ON EACH TAIWAN MADE HUB:**

# 1902-4W8 M R-100

YEAR	WEEK	MODEL NO.	DRIVER	F/R	NUMBER
------	------	-----------	--------	-----	--------

## TECHNOLOGIES

### EXPLORED SPARE PARTS FOR SERVICE KIT



### REPLACEMENT INSTRUCTION



### HUB WARRENTY AND MAINTENANCE GUIDE



AM

TECHNOLOGY

RATCHET SYSTEM

MTB

ROAD

PARTS



AM

TECHNOLOGY

RATCHET SYSTEM

MTB

ROAD

PARTS